

# Coastal Development

~levies on new build to offset pressures~

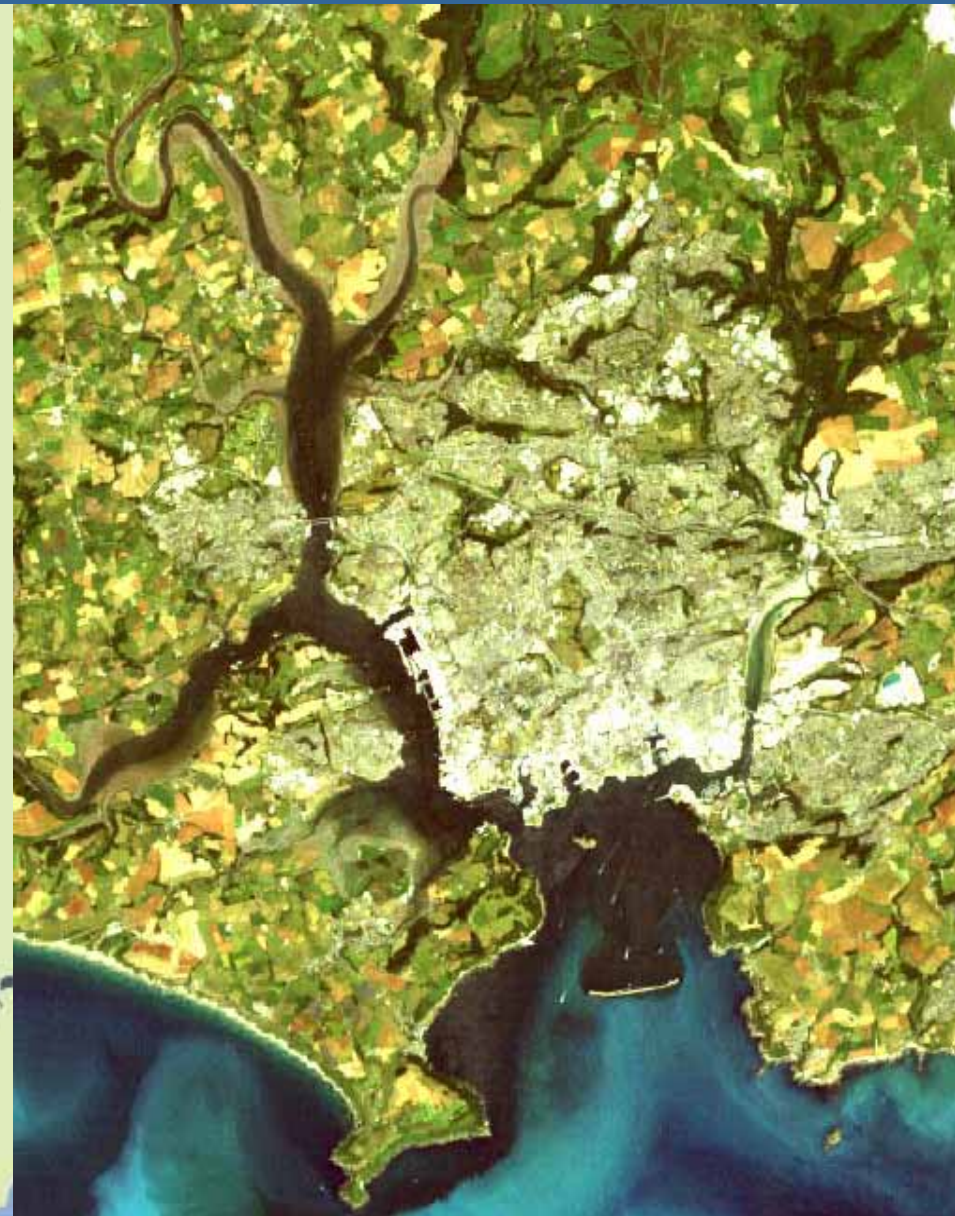
Kaja Curry

Coastal Planning Coordinator

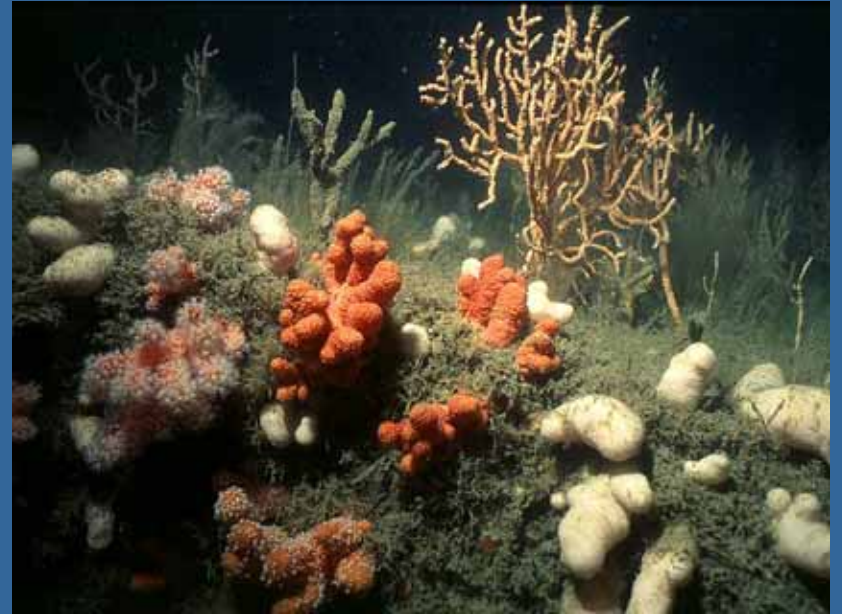
Tamar Estuaries Consultative Forum



# Plymouth Sound and Estuaries



# Habitats



# Common Species



# Important Species



Avocet



Egret



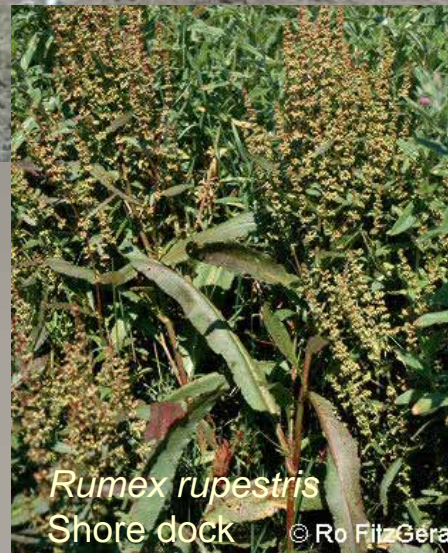
*Okenia elegans*  
Nudibranch



*Atrina fragilis* Fan Mussel



Allis shad  
*Alosa alosa*

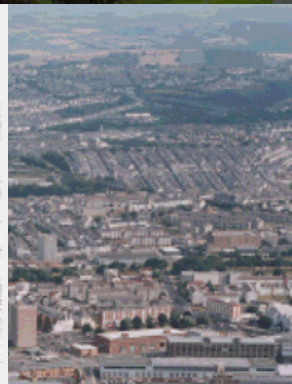


*Rumex rupestris*  
Shore dock

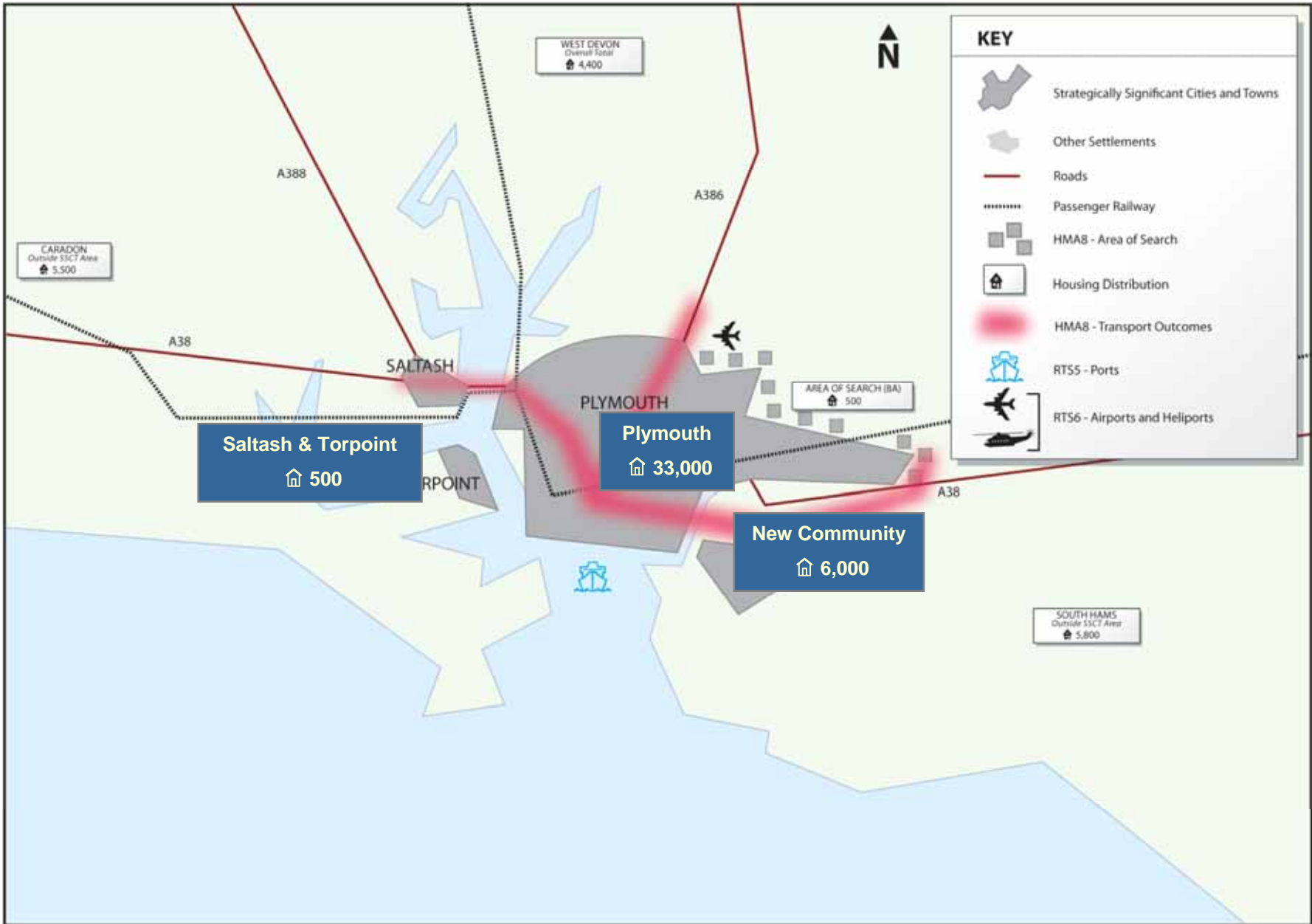


© Ro FitzGerald

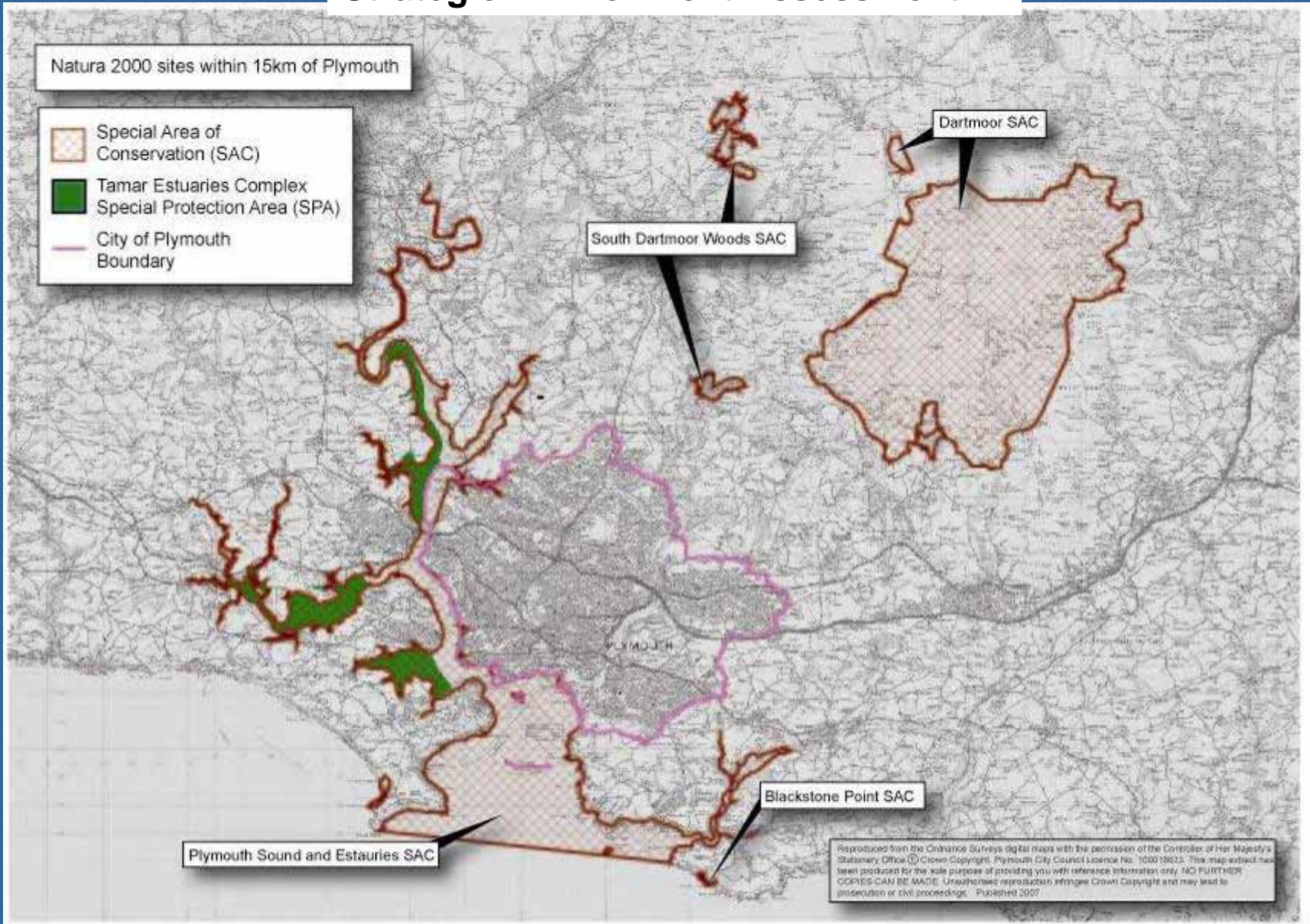
# Uses



# Key Diagram Inset 8 Plymouth Housing Market Area



# Strategic Environment Assessment





# Appropriate Assessment considered Impacts linked to:

- Air quality changes at South Dartmoor Woods SAC & Dartmoor SAC
- Recreational disturbance at South Dartmoor Woods SAC & Dartmoor SAC
- Water abstraction at Plymouth Sound & Estuaries SAC, Tamar Estuaries Complex SPA, Dartmoor SAC & South Dartmoor Woods SAC
- Water quality impacts at Plymouth Sound & Estuaries SAC & Tamar Estuaries Complex SPA..
- Biological Disturbance impacts from shore crab fishery & bait digging at Tamar Estuaries Complex SPA.
- Habitat loss associated with numerous small scale land claim events within Plymouth Sound & Estuaries SAC.
- Recreational disturbance impacts at Plymouth Sound & Estuaries & Tamar Estuaries Complex SPA.

# Appropriate Assessment Conclusions

**To avoid a significant adverse impact on the integrity of Plymouth Sound & Estuaries SAC, & Tamar Estuaries Complex SPA, arising from future recreational pressure Plymouth City Council will commit to the following:**

1. **Partnership funding & support** for the Tamar Estuaries Consultative Forum.
2. **Project funding & support:** Provide funding and relevant officer time to support recreation linked actions / projects as identified in Tamar Estuaries Management Plan Chapter 1 and 10. This should include a review and update of Port of Plymouth Area Recreation Study as a priority.
3. **Coastal Planning SPD** - Inclusion of relevant guidance in relation to shore side development in respect to managing recreational use of surrounding waters.
4. **Preparation of a Planning Obligations SPD** - Plymouth's forthcoming Planning Obligations SPD will include appropriate provisions for negotiating individual contributions towards managing recreational impact within Plymouth Sound & Estuaries European Marine site.

# Managing Recreation Impact 2006-2012

## Research

Recreation Study - general	24,000
Assessing recreational fishing	22,000
Shore crab fishery	5,500
Anchoring & mooring - impacts	8,000
Mooring Management info	12,000
Info for improving access	12,000
<b>Total:</b>	<b>83,500</b>

# Capital Projects & Staff Costs

Vol rules & stat regs	19,150
Info Management	31,000
Fishing panels, leaflets & website	30,900
Preventing pollution from boats	37,150
Educating shore based visitors	54,000
Info on access points	169,350
Staff costs	806,000
10% contingency	1,353,646
Total	1,265,880
b/f research	69,000
<b>GRAND TOTAL</b>	<b>1,353,646</b>

# Calculating Strategic Natural Environment Contributions

- Total cost for delivering management of recreational pressure = £1,353,646
- Extrapolated for 20 yrs = £4,954,000.
- Population in 2012 in TTWA = 384,060
- ∴ cost per head = £4,954,000 / 384,060
- = £12.90 / head.

# Contribution per Dwelling

Dwelling Size	Av Household	Contrib / dwelling
1 Bedroom	1.33	£17.16
2 Bed flat	1.86	£23.99
2 bed house	2.45	£31.60
3 bed	2.63	£33.93
4 bed	2.85	£36.76
5 bed	3.13	£40.38

# Unchartered Territory

- Affordability assessment has got cold feet;
- Will only charge 50% if tariff;
- Will delay introducing it until 2009.
- Must be ring-fenced;
- Must be profiled in such a way as to be usable.

# Questions?



[www.tamar-estuaries.org.uk](http://www.tamar-estuaries.org.uk)

[kaja.curry@plymouth.gov.uk](mailto:kaja.curry@plymouth.gov.uk)